



Chaire Desjardins
en finance responsable

par

Chrétien, Stéphane
Coggins, Frank

Cost of Equity for Energy Utilities : Beyond the CAPM

CAHIER DE RECHERCHE



UNIVERSITÉ DE
SHERBROOKE

COST OF EQUITY FOR ENERGY UTILITIES: BEYOND THE CAPM^{*}

Stéphane Chrétien[†]
Frank Coggins[‡]

Draft: February 2008

Abstract

The Capital Asset Pricing Model (CAPM) is often used to estimate the required rate of return of energy utilities in regulatory cases. This paper investigates the appropriateness of this choice in light of the large body of work questioning the empirical validity of the model. Consistent with its well documented misevaluation of low-beta, value-oriented investments, we find that the CAPM significantly underestimates the cost of equity of Canadian and American energy utilities compare to its historical value. We then consider two models developed in the finance literature to address some of the empirical problems of the CAPM. Our results indicate that these models are better specified than the CAPM for estimating the cost of equity of energy utilities.

JEL Classifications: G12, L51, L95, K23

Keywords: Cost of Capital, Rate of Returns, Energy Utilities, Asset Pricing Models

^{*} We would like to thank Joseph Doucet and Jacques St-Pierre for helpful discussions. We gratefully acknowledge financial support from the *Institut de Finance Mathématique de Montréal* and the *Faculté des sciences de l'administration, Université Laval* (Chrétien) and the *Faculté d'administration, Université de Sherbrooke* (Coggins).

[†] Faculté des sciences de l'administration, Université Laval and CIRPÉE. Mail: Pavillon Palasis-Prince, 2325, rue de la Terrasse, Quebec City, QC, Canada, G1V 0A6. Voice: (418) 656-2131, ext. 3380. Email: stephane.chretien@fsa.ulaval.ca.

[‡] Faculté d'administration, Université de Sherbrooke and CIRPÉE. Mail: 2500 Boul. Université, Sherbrooke, QC, Canada, J1K 2R1. Voici: (819) 821-8000, ext. 65156. Email: fcoggins@adm.usherbrooke.ca.

COST OF EQUITY FOR ENERGY UTILITIES: BEYOND THE CAPM

Abstract

The Capital Asset Pricing Model (CAPM) is often used to estimate the required rate of return of energy utilities in regulatory cases. This paper investigates the appropriateness of this choice in light of the large body of work questioning the empirical validity of the model. Consistent with its well documented misevaluation of low-beta, value-oriented investments, we find that the CAPM significantly underestimates the cost of equity of Canadian and American energy utilities compare to its historical value. We then consider two models developed in the finance literature to address some of the empirical problems of the CAPM. Our results indicate that these models are better specified than the CAPM for estimating the cost of equity of energy utilities.

JEL Classifications: G12, L51, L95, K23

Keywords: Cost of Capital, Rate of Returns, Energy Utilities, Asset Pricing Models

1. Introduction

An important aspect of the regulatory process for energy utilities is the determination of their equity rate of return. This return, also known as the cost of equity capital, represents the expected remuneration of the shareholders of the utilities, and is thus related to their ability to attract and retain capital. It is a crucial component of their total cost of capital, which is central to their investment policy and serves as a basis for setting up the rates to their customers. The purpose of this paper is to highlight the problems of the most commonly used model to determine the equity rate of return for energy utilities and to propose two alternative models that empirically improve on the estimation.

Regulatory bodies, like the National Energy Board in Canada or the Federal Energy Regulatory Commission in the United States, have the mandate to set the equity rate of return so that it is fair and reasonable. Specifically, the return should be comparable to the return available from the application of the capital to other enterprises of like risk. Traditionally, the regulated return was set through hearings, but since the 1990s, numerous boards have adopted an annual mechanism known as a “rate of return formula” or a “rate adjustment formula”. The use of rate adjustment formulas is particularly prevalent in Canada since the landmark March 1995 decision by the National Energy Board (Decision RH-2-94), which sets the stage for the widespread adoption of closely related formulas by provincial regulators.

Most rate adjustment formulas use a method known as the Equity Risk Premium method.¹ This method can be summarized as calculating a utility’s equity rate of return as the risk-free rate of return plus a premium that reflects its risk. The risk-free rate is usually related to the yield on a long-term government bond. The risk premium is obtained from the Capital Asset Pricing Model (CAPM) of Sharpe (1964) and Lintner (1965), a classic model of capital market equilibrium. It is equal to the utility’s beta, a measure of its systematic risk, multiplied by the market portfolio risk premium. The Equity Risk Premium method has a number of advantages. First, it is supported by a solid theoretical foundation in the academic literature. Second, it can be estimated based on stock market returns, thereby making it more objective than the other

¹ There exist other methods for estimating the rate of return, most notably the Comparable Earnings method and the Discounted Cash Flows method. These methods are generally not directly incorporated in the rate adjustment formulas.

methods, and relating it to current market conditions. Third, it is relatively simple to apply and requires data that can be obtained easily.

The Equity Risk Premium method is not, however, without shortcomings. Arguably its most criticized feature is the use of the CAPM as the basis to determine the risk premium. While the CAPM is one of the most important developments in finance, research over the last forty years has produced a large body of work critical of the model. On the theoretical side, Cochrane (1999) summarizes the current most prevalent academic view: “In retrospect, it is surprising that the CAPM worked so well for so long. The assumptions on which it is built are very stylized and simplified.”² For example, at least since Merton (1973), it is recognized that factors, state variables or sources of priced risk beyond the movements in the market portfolio (the only risk factor in the CAPM) might be needed to explain why some risk premiums are higher than others. On the empirical side, the finance literature abounds with CAPM deficiencies (so-called “anomalies”). Fama and French (2004) review this literature to highlight that the CAPM is problematic in the estimation of the risk premium of low-beta firms, small-capitalisation firms and value (or low-growth) firms. While these problems have been well documented in the finance literature, their effects have not yet been fully explored in the determination of the rate of return for the utilities sector.

Considering the importance of the CAPM in determining the regulated equity rate of return, the objectives of this paper are two-folds. First, we re-examine the use of the model in the context of energy utilities to determine if it is problematic. As energy utilities are typically low-beta, value-oriented investments, the finance literature suggests that the model will have difficulties in estimating their risk premiums. We analyze the issue empirically by estimating the model and its resulting risk premiums for a sample of Canadian and American energy utilities mostly related to the gas distribution sector, and by testing for the presence of significant differences between the model’s risk premium estimates and the historical ones.

Second, we implement two alternative models that are designed to circumvent some of the empirical problems of the CAPM. The first alternative is a three-factor model proposed by Fama and

² Cochrane (1999), p. 39.

French (1993) (the Fama-French model hereafter). This model has been used to estimate the cost of equity by Fama and French (1997) for general industrial sectors and by Schink and Bower (1994) for the utilities sector in particular. The second alternative is a modified CAPM that includes the adjustments proposed by Blume (1975) and Litzenberger, Ramaswamy and Sosin (1980) (the Adjusted CAPM hereafter). The Fama-French model and the Adjusted CAPM provide useful comparisons with the CAPM on the estimation of the risk premiums of energy utilities.

Our empirical results can be summarized as follows. First, the CAPM significantly underestimates the risk premiums of energy utilities compare to their historical values. The underestimations are economically important, with annual averages of respectively 4.5% and 6.2% for the Canadian and American gas utilities we consider, and are consistent with the finance literature on the mispricing of low-beta, value-oriented stocks. Second, the Fama-French model and the Adjusted CAPM are both able to provide costs of equity that are not significantly different from the historical ones. Our results show that the value premium, in the case of the Fama-French model, and a bias correction, in the case of the Adjusted CAPM, are important to account for the elimination of the CAPM underestimations. Both models suggest average risk premiums between 4% and 8% for gas utilities portfolios, and are found relevant at the individual utility level as well as at the general utilities sector level.

Overall, we conclude that the CAPM is problematic in estimating econometrically the cost of equity of energy utilities. The Fama-French model and the Adjusted CAPM are better specified for this purpose as they reduce considerably the estimation errors. These models could thus be considered as valid alternatives to the CAPM in the Equity Risk Premium method employed by regulatory bodies.

The rest of the paper is divided as follows. The next section presents our sample of energy utilities and reference portfolios. The third, fourth and fifth sections examine the risk premium estimates with the CAPM, the Fama-French model and the Adjusted CAPM, respectively. Each section provides an overview of the model, presents its empirical estimation and results, and discusses the implications of our findings. The last section concludes.

2. Sample Selection and Descriptive Statistics

This section examines the sample of firms and portfolios for our estimation of the cost of equity of energy utilities. We focus on the gas distribution sector to present complete sector-level and firm-level results, but we also consider utilities indexes to ensure the robustness to other utilities. We provide Canadian and American results for comparison, as both energy markets are relatively integrated and investors might expect similar returns. We first discuss sample selection issues and then present descriptive statistics.

2.1. Sample Selection

Two important choices guide our sample selection process. First, we use monthly historical data in order to have sufficient data for estimating the parameters and test statistics, while avoiding the microstructure problems of the stock markets (low liquidity for numerous securities, non-synchronization of transactions, etc.) in higher frequency data.³ We then annualized our results for convenience, as the regulated rate of return is an annual figure. Second, we emphasize reference portfolios (such as sector indexes) over individual firms. Reference portfolios reduce the potentially large noise (or diversifiable risk) in the stock market returns of individual firms. They allow for an increased statistical accuracy of the estimates, an advantage recognized since (at least) Fama and MacBeth (1973), and alleviate the problem that we do not observe the returns on utilities directly and must rely on utility holding companies.

To represent the gas distribution sector in Canada and the U.S., we use a published index and a constructed portfolio for each market. The independently-calculated published indexes are widely available and consider the entire history of firms having belonged to the gas distribution sector. The constructed portfolios use the most relevant firms at present in the gas distribution or energy utility sector. The data collection also allows an examination of the robustness of our results at the firm level. The resulting four gas distribution reference portfolios are identified and described below.

- *DJ_GasDi*: A Canadian gas distribution index published by Dow Jones, i.e. the “Dow Jones Canada Gas Distribution Index.” The firms in the index are weighted by their market value. Monthly returns (180) are available from January 1992 to December 2006;

³ See Fowler, Rorke and Jog (1979, 1980) for an analysis of these problems in the Canadian stock markets.

- *CAindex*: An equally-weighted constructed portfolio formed of 13 Canadian energy utilities, most with activities that are related to the gas distribution sector, i.e. ATCO Ltd., Algonquin Power Income Fund, Canadian Utilities Limited, EPCOR Power, Emera Incorporated, Enbridge Inc., Fort Chicago Energy Partners, Fortis Inc., Gaz Métro Limited Partnership, Northland Power Income Fund, Pacific Northern Gas, TransAlta Corporation and TransCanada Pipelines.⁴ Monthly returns (263) are available from February 1985 to December 2006;
- *DJ_GasUS*: A U.S. gas distribution index published by Dow Jones, i.e. the “Dow Jones US Gas Distribution Index.” The firms in the index are weighted by their market value. Monthly returns (180) are available from January 1992 to December 2006;
- *USindex*: An equally-weighted constructed portfolio formed of nine U.S. firms whose activities are heavily concentrated in local gas distribution, i.e. AGL Resources Inc., Atmos Energy Corp., Laclede Group, New Jersey Resources Corp., Northwest Natural Gas Co., Piedmont Natural Gas Co., South Jersey Industries, Southwest Gas Corp. and WGL Holdings Inc. Monthly returns (407) are available from February 1973 to December 2006.

To confirm the validity of our analysis to other energy utilities, we also consider four utilities reference portfolios, which consist of the general indexes of the utilities sector described below.

- *DJ_Util*: A Canadian utilities index published by Dow Jones, i.e. the “Dow Jones Canada Utilities Index.” The firms in the index are weighted by their market value. Monthly returns (180) are available from January 1992 to December 2006;
- *TSX_Util*: A Canadian utilities index published by S&P/TSX, i.e. the “S&P/TSX Utilities Index.” The firms in the index are weighted by their market value. Monthly returns (228) are available from January 1988 to December 2006;

⁴ We also considered AltaGas Utility Group, Enbridge Income Fund, Westcoast Energy, Nova Scotia Power and Energy Savings Income Fund. We did not retain the first four because they had a returns history of less than 60 months. We eliminated the last one because it is a gas broker and its average monthly return of more than 3% was a statistical outlier. Our results are robust to variations in the formation of the CAindex portfolio, like the inclusion of these five firms or the exclusion of income funds and limited partnerships.

- *DJ_UtiUS*: A U.S. utilities index published by Dow Jones, i.e. the “Dow Jones US Utilities Index.” The firms in the index are weighted by their market value. Monthly returns (180) are available from January 1992 to December 2006;
- *FF_Util*: A U.S. utilities index formed by Profs. Fama and French, or the University of Chicago and Dartmouth College, respectively. The firms in the index are weighted by their market value. Monthly returns (407) are available from February 1973 to December 2006.

According to their availability, the reference portfolio return series have different starting dates (resulting in samples with 180 to 407 observations). In our estimation of the parameters, we keep the maximum number of available observations for each series. Fama and French (1997) find that such a choice results in costs of equity more precisely estimated and with more predictive ability than costs of equity obtained from rolling five-year estimation windows, a common choice in practice. The data are collected from the Canadian Financial Markets Research Center (CFMRC), Datastream, the web site of Prof. French⁵ and the web site of Dow Jones Indexes⁶.

2.2. Descriptive Statistics

Descriptive statistics (number of observations, mean, standard deviation, minimum and maximum) for the series of monthly returns are presented in Table 1. Panel A shows the results for the 13 Canadian energy utilities and their equally-weighted portfolio (CAindex). Panel B shows the results for nine U.S. firms whose activities are heavily concentrated in gas distribution and their equally-weighted portfolio (USindex). Panel C shows the statistics for Canadian and U.S. indexes for the utilities sector (DJ_Util, DJ_UtilUS, TSX_Util and FF_Util) and the gas distribution sub-sector (DJ_GasDi and DJ_GasUS).⁷

INSERT TABLE 1 HERE.

⁵ http://mba.tuck.dartmouth.edu/pages/faculty/ken.french/data_library.html.

⁶ <http://www.djindexes.com/mdsidx/index.cfm?event=showtotalMarketIndexData&perf=Historical%20Values>.

⁷ The returns from August to November 2001 of the Dow Jones U.S. indexes are strongly influenced by the Enron debacle, which started with the resignation of its CEO, Jeffrey Skilling, on August 14, 2001 and ended with the bankruptcy of the company on December 2, 2001. During those four months, the DJ_GasUS and DJ_UtiUS indices lost 68.9% and 16.2% of their value, respectively. By comparison, the equally-weighted portfolio of U.S. gas distributors – USindex – gained 1.2% and the Fama-French utilities index – FF_Util – lost 6.2 %. In order to soften the impact of that statistical aberration (caused by an unprecedented fraud) on the estimation of the risk premium, the returns from August to November 2001 of DJ_GasUS and DJ_UtilUS are replaced by those of USindex and FF_Util, respectively.

For the Canadian energy utilities in our sample, the monthly average return of all 13 firms is 1.0% with a standard deviation of 3.1%. The Dow Jones Canada Gas Distribution Index, the Dow Jones Canada Utilities Index and the S&P/TSX Utilities Index have mean returns of 1.2%, 0.7% and 1.0%, respectively. The monthly average return of the nine U.S. local gas distribution utilities is 1.2% with a standard deviation of 4.1%. The Dow Jones US Gas Distribution Index, the Dow Jones US Utilities Index and the Fama-French U.S. Utilities Index show mean returns of 1.2%, 0.9% and 1.0%, respectively. Correlations between the four gas distribution reference portfolios (not tabulated) are between 0.29 and 0.80. These correlations indicate that the portfolios are not perfect substitutes but capture some common elements of the gas distribution sector. We next start our analysis of the equity risk premium estimation models.

3. Equity Risk Premium with the CAPM

This section examines the use of the Capital Asset Pricing Model (CAPM) for estimating the rate of return for energy utilities. The CAPM is the model the most often associated with the Equity Risk Premium method that is the basis of the rate adjustment formulas of regulatory bodies. We first present the model and its relevant literature. Then we estimate the model for our sample of energy utilities. Finally, we discuss the implications of our findings.

3.1. Model and Literature

The CAPM is a model proposed by Sharpe (1964) and Lintner (1965) in which the expected equity return or cost of equity for a gas utility is given by

$$E(R_{GAS}) = R_f + \beta \times \lambda_m,$$

where R_f is the risk-free rate, β is the firm's beta or sensitivity to the market returns and λ_m is the market risk premium. In this model, a higher beta results in a higher risk premium.

The CAPM is the best known model of expected return. In spite of its undeniable importance in the field of finance, it has long been rejected by numerous empirical tests in the academic literature. The empirical rejections start with the first tests (Black, Jensen and Scholes (1972), Fama and MacBeth (1973) and Blume and Friend (1973)) that find that the relation between beta and average return is flatter than

predicted by the model. They continue with the discovery of numerous “anomalies” (like the price-to-earnings effect of Basu, 1977, the size effect of Banz, 1981, etc.). Finally, in the 1990s, based on high-impact articles, including Fama and French (1992, 1993, 1996a and 1996b), Jegadeesh and Titman (1993) and Jagannathan and Wang (1996), the academic profession reaches a relative consensus that the CAPM is not valid empirically. In Canada, like elsewhere in the world, the literature reaches similar conclusions (see Morin, 1980, Bartholdy, 1993, Bourgeois and Lussier, 1994, Elfakhani, Lockwood and Zaher, 1998, L’Her, Masmoudi and Suret, 2002, 2004.).

A complete review of the literature on the problems of the CAPM is beyond the scope of this paper. It is nevertheless important to point out the two characteristics of energy utilities that suggest the CAPM might be problematic in estimating their equity return. First, energy utilities have typically low betas, significantly below one. Second, they are known as value investments, in the sense that they have high earnings-to-price, book-to-market, cash flows-to-price or dividend-to-price ratios. In a summary article requested for a symposium on the 40th anniversary of the CAPM, Fama and French (2004) highlight the result of using the model to estimate the cost of equity capital for firms with these two characteristics:

“As a result, CAPM estimates of the cost of equity for high beta stocks are too high (relative to historical average returns) and estimates for low beta stocks are too low (Friend and Blume, 1970). Similarly, if the high average returns on value stocks (with high book-to-market ratios) imply high expected returns, CAPM cost of equity estimates for such stocks are too low.”⁸

As Fama and French (2004) indicate, the low-beta and value characteristics of energy utilities will probably lead the CAPM to estimate a rate of return that is too low. We next examine whether this undervaluation in fact exists in our sample of reference portfolios and utilities.

3.2. Risk Premium Estimates

This section empirically estimates the risk premium with the CAPM using the previously described Canadian and U.S. monthly data. More specifically, we estimate the model using the time-series regression approach pioneered by Black, Jensen and Scholes (1972) with the following equation:

⁸ Fama and French (2004), p. 43-44.

$$R_{GAS,t} - R_{f,t} = \alpha_{GAS} + \beta \times \lambda_{m,t} + \varepsilon_{GAS,t} ,$$

where $\lambda_{m,t} = R_{m,t} - R_{f,t}$ is the return on the market portfolio in excess of the risk-free return and $\varepsilon_{GAS,t}$ is the mean-zero regression error, at time t . In this equation, the CAPM predicts that the alpha (the intercept) is zero ($\alpha_{GAS} = 0$) and the gas utility risk premium is $E(R_{GAS,t} - R_{f,t}) = \beta \times E(\lambda_{m,t})$. An alpha different from zero can be interpreted as the risk premium error of the CAPM (see Pastor and Stambaugh, 1999). A positive alpha indicates the CAPM does not prescribe a large enough risk premium compare to its historical value (an underestimation), whereas a negative alpha indicates the CAPM prescribes a risk premium that is too large (an overestimation). It is therefore possible to determine the risk premium error of the CAPM for energy utilities based on the estimates of the alpha.

We use Hansen's (1982) Generalized Method of Moments technique in order to estimate jointly the parameters α_{GAS} and β of the model and the market risk premium $E(\lambda_{m,t})$. As Cochrane (2001, Section 12.1) shows, this method has the necessary flexibility to correct the results for possible econometric problems in the data.⁹ We take the monthly returns on portfolios of all listed securities weighted by their market value for the market portfolio returns and on the Treasury bills for the risk-free returns.¹⁰ The annualized mean market risk premiums are 5.2% for Canada from February 1985 to December 2006 and 6.0% for the U.S. from February 1973 to December 2006.

Table 2 shows the results of the regressions using each of the four gas distribution reference portfolios. The estimates of the annualized risk premium error (or annualized α_{GAS}), the beta β and the risk premium $\beta \times E(\lambda_{m,t})$ of the CAPM are presented in Panels A, B and C, respectively. For each estimate, the table also shows its standard error, t-statistic and probability it equals zero (or p-value).

INSERT TABLE 2 HERE.

⁹ All standard errors and statistical tests have been estimated using the Newey and West (1987) method, which takes account of the potential heteroscedasticity and autocorrelation in the errors of the statistical models.

¹⁰ The data sources are CFMRC (until 2004) and Datastream (thereafter) for the Canadian returns and the web site of Prof. French for U.S. returns.

The estimates in Panel A of Table 2 indicate that the risk premium errors are always positive. As the literature reviewed by Fama and French (2004) suggests, the CAPM underestimates the risk premium for the gas distribution reference portfolios. The underestimation is not small – a minimum of 4.52% (for CAindex) and a maximum of 8.43% (for DJ_GasDi) – and is statistically greater than zero for all portfolios. Also, as expected, the underestimation comes with low beta estimates, with values between 0.21 and 0.46 in Panel B. For example, for CAindex, the beta is 0.34 and the annualized risk premium predicted by the CAPM is 1.76%, an underestimation of the historical risk premium $\alpha_{GAS} = 4.52\%$.

To verify the underestimation is not an artefact of the utilization of the reference portfolios and is robust to other energy utilities, Figure 1 shows the risk premium errors for the utilities that make up the CAindex portfolio (Figure 1a), the gas distributors in the USindex portfolios (Figure 1b) and the four utilities reference portfolios (Figure 1c). Once again, the alphas are always positive, with values between 2.1% and 8.9% for the Canadian utilities, between 3.5% and 8.4% for the U.S. gas distributors, and between 2.1% and 5.0% for the utilities reference portfolios. The constantly positive and often significant errors support the notion that the CAPM might not be appropriate for determining the risk premium in the utilities sector.

INSERT FIGURE 1 HERE.

3.3. Discussion

Our results show that the CAPM underestimates the risk premium for the gas distribution sub-sector in particular and for the utilities sector in general. This finding does not however generalize to all sectors. In fact, the empirical literature finds that the CAPM is rejected because it tends to underestimate the risk premium of securities or sectors associated with low-beta, value and small-cap firms, and tends to overestimate the risk premium of securities or sectors associated with high-beta and growth firms (see Fama and French, 1992, 1993, 1996a, 1996b, 1997, 1998). While the magnitude of the underestimation for the utilities is large, it is not unexpected. Figures 2 and 3 in Fama and French (2004) are helpful in this

regard. They show visually that the underestimation is about 3% for the lowest beta stocks and about 4% for typical value stocks, resulting in a total underestimation consistent to the ones we estimate.

Our results are similar to numerous scientific studies documenting that the alphas of the CAPM are significantly different from zero, resulting in rejections of the model. As a consequence of these rejections, finance researchers have considered various models that generalized the CAPM as well as various empirical improvements to the estimates of the CAPM. Based on this literature, we explore two alternative ways of estimating the risk premium of energy utilities in the next two sections.

4. Equity Risk Premium with the Fama-French model

The CAPM claims that a single factor, the market portfolio return, can explain expected returns. The most natural extension, called a multifactor model, is to take multiple factors into account. Clearly, if factors other than the market return have positive risk premiums that contribute to explaining expected returns, then the inclusion of those factors should provide a better estimate of the risk premium and potentially eliminate the CAPM errors (see Merton, 1973, and Ross, 1976, for formal theoretical justifications). This section considers the generalization of the CAPM arguably the most empirically promising, a multifactor model by Fama and French (1993). We first describe the model and then use it to estimate the risk premium of energy utilities. We finally discuss the interpretation of our findings.

4.1. Model and Literature

The Fama-French model is a three-factor model developed to capture the anomalous returns associated with small-cap, value and growth portfolios by including risk premiums for size and value. For a gas utility, the expected equity return is given by

$$E(R_{GAS}) = R_f + \beta \times \lambda_m + \beta_{SIZE} \times \lambda_{SIZE} + \beta_{VALUE} \times \lambda_{VALUE},$$

where R_f is the risk-free rate, β , β_{SIZE} and β_{VALUE} are respectively the firm's market, size and value betas, and λ_m , λ_{SIZE} and λ_{VALUE} are respectively the market, size and value risk premiums. The three betas represent sensitivities to the three sources of risk, and the higher are their values, the higher is a firm's risk premium. In cases when the size and value risk factors are not relevant, then the Fama-French model

reduces to the CAPM. Theoretical justifications for the size and value premiums are provided by Berk, Green and Naik (1999), Gomez, Kogan and Zhang (2003), and Carlson, Fisher and Giammarino (2004). Fama and French (1993, 1996a) are the two of the most influential empirical tests of the model.

Like the CAPM, the Fama-French model has been used in applications ranging from performance measurement to abnormal return estimation and asset valuation. For the calculation of the cost of equity capital, the model is studied by, among others, Schink and Bower (1994), Fama and French (1997), and Pastor and Stambaugh (1999). It has also proven to be relevant for explaining stock market returns in most countries where it has been examined. For example, in Canada, the model is validated by Elfakhani, Lockwood and Zaher (1998) and L'Her, Masmoudi and Suret (2002). Given that energy utilities are associated with value investments, the Fama-French model has the potential to improve the estimation of their rates of returns. We next assess this possibility for our sample of reference portfolios and utilities.

4.2. Risk Premium Estimates

The risk premium with the Fama-French model is estimated with a methodology that is similar to the one followed for the CAPM using the following equation:

$$R_{GAS,t} - R_{f,t} = \alpha_{GAS}^{FF} + \beta \times \lambda_{m,t} + \beta_{SIZE} \times \lambda_{SIZE,t} + \beta_{VALUE} \times \lambda_{VALUE,t} + v_{GAS,t},$$

where $\lambda_{m,t} = R_{m,t} - R_{f,t}$ is the return on the market portfolio in excess of the risk-free return, $\lambda_{SIZE,t} = R_{SMALL,t} - R_{LARGE,t}$ is the return on a small-cap portfolio in excess of the return on a large-cap portfolio, $\lambda_{VALUE,t} = R_{VALUE,t} - R_{GROWTH,t}$ is the return on a value portfolio in excess of the return on a growth portfolio and $v_{GAS,t}$ is the mean-zero regression error, at time t . The intercept parameter α_{GAS}^{FF} is still interpreted as the risk premium error. The three beta parameters give the sensitivities to the market, size and value factors. Finally, the expression $\beta \times E(\lambda_{m,t}) + \beta_{SIZE} \times E(\lambda_{SIZE,t}) + \beta_{VALUE} \times E(\lambda_{VALUE,t})$ represents the risk premium from the Fama-French model.

The data for the market portfolio returns and the risk-free returns are the same used in the CAPM estimation. For the Canadian regressions, the small-cap portfolio returns are from a portfolio of all listed

securities weighted equally whereas the large-cap portfolio returns are from a portfolio of all listed securities weighted by their market value.¹¹ The value and growth portfolios are determined from the earnings-to-price ratio. Specifically, the value (growth) portfolio contains firms having an earnings/price ratio in the highest (lowest) 30%.¹² For U.S. regressions, the size and value premiums are the Fama and French (1993, 1996a) SMB and HML variables, which are computed from market capitalization (size) and book-to-market ratio (value).¹³ The annualized mean size and value risk premiums are respectively 8.9% and 6.4% for Canada from February 1985 to December 2006 and 2.7% and 6.0% for the U.S. from February 1973 to December 2006.

Table 3 presents the results of the estimates of the coefficients and the risk premium with the Fama-French model for the four gas distribution reference portfolios previously described. Panel A shows that the annualized risk premium errors are still positive for the four portfolios, ranging from 0.31% (for USIndex) to 4.45% (for DJ_GasDi), but the underestimation is now statistically negligible. Panel D confirms that the inclusion of the value risk premium is instrumental in the reduction of the errors. The value betas are highly significant, with values between 0.30 and 0.71. The size betas (Panel C) are low and often not statistically different from zero, whereas the market betas (Panel B) are 0.54 on average. The estimated risk premiums vary between 4.23% and 8.83%.

INSERT TABLE 3 HERE.

Figure 2 compares the Fama-French and CAPM results. Figure 2a illustrates the risk premium errors of the two models, while Figure 2b shows their explanatory power given by the adjusted R^2 . The

¹¹ These indexes are taken from CFMRC for returns up to 2004 and then completed by the returns of the S&P/TSX Composite Index and the MSCI Barra Smallcap Index, respectively.

¹² Data come from the web site of Prof. French, who also provides specific instructions on the composition of the portfolios. The site gives returns for value and growth portfolios based on four indicators – earnings-to-price, book-to-market, cash flows-to-price and dividend-to-price. Fama and French (1996a) show that these indicators contain the same information about expected returns. Fama and French (1998) confirm the relevance of these indicators in explaining the returns in 12 major international financial markets and emerging financial markets. We chose the earnings-to-price indicator because it is more effective in capturing the premium of value securities compared to growth securities in Canada (see Bartholdy, 1993, and Bourgeois and Lussier, 1994). The indicator book-to-market is less effective in Canada because the value effect is mainly concentrated in more extreme portfolios (highest and lowest 10%) than in those available on the site (see L'Her, Masmoudi and Suret, 2002).

¹³ Data again come from the web site of Prof. French. Detailed instructions on the composition of the SMB and HML variables are also provided.

errors have substantially fallen with the Fama-French model for all reference portfolios. Furthermore, the Fama-French model explains a much larger proportion of the variation in the reference portfolio returns.

INSERT FIGURE 2 HERE.

Figures 3 and 4 present the risk premium errors and the value betas, respectively, for the utilities that make up the CAindex portfolios (Figures 3a and 4a), the gas distributors in the USindex portfolios (Figures 3b and 4b) and the four utilities reference portfolios (Figures 3c and 4c). A comparison of Figure 3 with Figure 1 shows that the risk premium errors have decreased in all cases. None of the errors are now significantly different from zero. Figure 4 confirms that the reductions in the risk premium errors are caused by the inclusion of the value risk premium. All value betas are greater than 0.23 and statistically significant. For example, the TSX_Util portfolio has a value beta of 0.41 that contributes to reduce its risk premium error from 5.0% with the CAPM to 0.7% with the Fama-French model.

INSERT FIGURE 3 HERE.

INSERT FIGURE 4 HERE.

4.3. Discussion

Our results support the notion that the Fama-French model is better suited to estimate the risk premium for energy utilities than the CAPM, consistent with the findings of Schink and Bower (1994). They obtain higher costs of equity with the Fama-French model than with the CAPM and significant value betas, similar to the results for utilities reported by Schink and Bower (1994), Fama and French (1997) and Pastor and Stambaugh (1999). Arguably, the Fama-French model is also one of the most widely used models of expected stock returns in the academic finance literature (Davis, 2006).¹⁴ Nevertheless, the model has not yet been adopted by regulatory bodies. One potential reason is that there is still a debate on the interpretation of the size and value premiums as rational or irrational factors.

On one side, starting with Fama and French (1993), the size and value factors are presented as part of a rational asset pricing model, where they reflect either state variables that predict investment

¹⁴ Another widely used model is the model of Carhart (1997), which adds a fourth factor to the Fama-French model to capture the momentum effect of Jegadeesh and Titman (1993). But since this effect is short-lived, the additional factor is irrelevant for estimates of the cost of equity capital.

opportunities following the theory of Merton (1973), or statistically useful variables to explain the returns following the theory of Ross (1976). On the other side, as first advocated by Lakonishok, Shleifer and Vishny (1994), the size and value factors are thought to be related to investors' irrationality in the sense that large-cap and growth stocks tend to be glamorized whereas small-cap and value stocks tend to be neglected. There is a vast literature on both sides of this debate.¹⁵

While the debate is important to improve our understanding of capital markets, Stein (1996) demonstrates that the theoretical interpretation of the model is not relevant to its application to determine the cost of capital. On one side, if the Fama-French model is rational, then the size and value factors capture true risks and should be accounted for in the risk premiums of energy utilities. On the other side, if the size and value factors are irrational, then the significant value betas of energy utilities indicate that they are neglected or undervalued firms. In this case, Stein (1996) shows that rational firms should not undertake a project that provides an expected return lower than the return estimated by the potentially irrational Fama-French model. They are better off in rejecting the project and simply buying back their own shares for which they expect an inflated future return because of the undervaluation. Thus, the potentially irrational Fama-French estimates serve as the appropriate hurdle rate for project investments. Hence, for both interpretations, the equity cost of capital of energy utilities generated by the Fama-French model is a useful guideline of the fair and reasonable rate of return for regulators. The next section looks at a second approach that goes beyond the CAPM to estimate the equity risk premium.

5. Equity Risk Premium with the Adjusted CAPM

This section considers two empirical adjustments to the CAPM estimates that have been proposed in the academic literature to account for their deficiencies. We call the CAPM with the addition of the two modifications the "Adjusted CAPM". Unlike the CAPM and the Fama-French model, the Adjusted CAPM is not an equilibrium model of expected returns. It contains adjustments to the CAPM that are empirically justified in a context where the known difficulties of a theoretical model need to be lessened for improved

¹⁵ A third interpretation, following Lo and MacKinlay (1990) and Kothari, Shanken and Sloan (1995), is that the results of the Fama-French model are spurious, due to in-sample biases like data snooping or survivorship. However, the fact that similar size and value premiums have been found in countries outside the U.S. has rendered this explanation less appealing.

estimation. We first introduce the Adjusted CAPM. Then we implement it to estimate the risk premium of energy utilities. We finally offer a brief discussion of our findings.

5.1. Model and Literature

The Adjusted CAPM is based on the CAPM but provides more realistic estimates of the rate of return by considering the empirical problems of the CAPM. More specifically, the Adjusted CAPM is a model in which the expected equity return of a gas utility is arrived at by

$$E(R_{GAS}) = R_f + \alpha_{GAS} \times (1 - \beta^{Adj}) + \beta^{Adj} \times \lambda_m.$$

Compare to the CAPM, this equation incorporates a modification to take into account that empirically estimated betas can be adjusted for better predictive power and a modification to take account of the fact the alpha (risk premium error) is high for low-beta value-oriented firms in the CAPM.

The first modification originates from the works of Blume (1971, 1975). Blume (1971) examines historical portfolio betas over two consecutive periods and finds that the historical betas, from one period to another, regress towards one, the average of the market. He also shows that the historical betas adjusted towards one predict future betas better than unadjusted betas. Blume (1975) builds a historical beta adjustment model to capture the tendency to regress towards one. He discovers that the best adjustment is to use a beta equal to $0.343 + 0.677 \times \beta^{His}$, a finding that led to the concept of “adjusted beta”. Merrill Lynch, which popularized the use of adjusted betas based on Blume (1975)’s results, advocates the adjustment $\beta^{Adj} = 0.333 + 0.667 \times \beta^{His}$. Merrill Lynch’s adjusted beta, now widely used in practice, represents a weighted-average between the beta of the market and the historical beta, with a two-thirds weighting on the historical beta.

The second adjustment is initially proposed by Litzenberger, Ramaswamy and Sosin (1980), who consider solutions to the problem that the CAPM gives a cost of equity capital with a downward bias for low beta firms, as discussed in section 3.1. They note that one way of remedying the problem is to add a bias correction to the CAPM risk premium. To be effective, the correction must take account of the importance of the risk premium error and the level of the firm’s beta because these two elements influence

the magnitude of the problem. To do this for low beta securities, Litzenberger, Ramaswamy and Sossin (1980) propose the bias correction $\alpha_{GAS} \times (1 - \beta)$. As desired, the correction increases with the risk premium error of the CAPM, and decreases with the beta. The correction is nil for a firm for which the CAPM already works well (when $\alpha_{GAS} = 0$) or for a firm having a beta of one, two cases where the CAPM produces a fair rate of return on average. Morin (2006, Section 6.3) presents an application of this adjustment in regulatory finance through a model he calls the empirical CAPM.

In summary, the two modifications incorporated in the Adjusted CAPM involve first using the adjusted beta instead of the historical beta and second including the bias correction in the risk premium calculation. Considering the documented empirical usefulness of the two adjustments, the Adjusted CAPM has the potential to estimate a more reasonable risk premium for the energy utilities.

5.2. Risk Premium Estimates

To compute the Adjusted CAPM estimates for our sample of utilities, the starting point is the estimates of the CAPM of Section 3.2, given in Table 2. The beta estimates are now understood as the unadjusted historical betas β^{His} . The gas utility risk premium with the Adjusted CAPM can then be expressed as $\alpha_{GAS} \times (1 - \beta^{Adj}) + \beta^{Adj} \times E(\lambda_{m,t})$, where $\beta^{Adj} = 0.333 + 0.667 \times \beta^{His}$. The risk premium error on the Adjusted CAPM is arrived at by $\alpha_{GAS}^{Adj} = E(R_{GAS,t} - R_{f,t}) - [\alpha_{GAS} \times (1 - \beta^{Adj}) + \beta^{Adj} \times E(\lambda_{m,t})]$.

Table 4 shows the Adjusted CAPM estimates using the four gas distribution reference portfolios. The estimates of the risk premium error α_{GAS}^{Adj} , the adjusted beta β^{Adj} , the bias correction $\alpha_{GAS} \times (1 - \beta^{Adj})$ and the risk premium are shown in Panels A, B, C and D, respectively. The risk premium errors are still positive for the four portfolios, with values ranging from 1.39% (for CAindex) to 2.89% (for USindex), but the underestimation is only significant for a single portfolio (for USindex). The reduction in errors comes from the use of adjusted betas, which are 0.56 on average, and the bias corrections, which are 2.96% on average. Lastly, the risk premiums vary between 4.88% and 8.27%, findings that are comparable to the estimates obtained with the Fama-French model.

INSERT TABLE 4 HERE.

Figure 5 shows the risk premium errors for the utilities that make up the CAindex portfolios (Figure 5a), the gas distributors in the USindex portfolios (Figure 5b) and the four utilities reference portfolios (Figure 5c). The errors are generally insignificant and a comparison with Figure 1 indicates that they have decreased considerably for all portfolios. For example, for the TSX_Util portfolio, the error is down from 5.0% with the CAPM to 0.9% with the Adjusted CAPM.

INSERT FIGURE 5 HERE.

5.3. Discussion

Our results support the validity of the Adjusted CAPM as a useful model for determining the rate of return on energy utilities. While its risk premium estimates are in the same range as the Fama-French estimates, it arrives at its results from a different perspective. The Fama-French model advocates the use of additional risk factors to reduce the CAPM risk premium errors. The Adjusted CAPM, through its bias correction, effectively estimates the risk premium as a weighted-average of the CAPM risk premium and the realized historical risk premium, with a weighting of beta on the former.

The Adjusted CAPM thus recognizes that the CAPM is an imperfect model that can be improved with the information contained in the historical returns. Pastor and Stambaugh (1999) proposes a similar strategy by demonstrating how to estimate the cost of equity by using Bayesian econometrics to incorporate the CAPM risk premium error (or alpha) in an optimal manner based on the priors of the evaluator. Consistent with our results with the Adjusted CAPM, they also show evidence of higher costs of equity for energy utilities using their technique than using the CAPM alone.¹⁶ As the Adjusted CAPM does not require additional risk factors like size and value, the model might be easier to interpret for regulators already familiar with the standard CAPM in their decisions.

¹⁶ Pastor and Stambaugh (1999) obtain risk premiums that vary between the CAPM estimates, when they assume that there is zero prior uncertainty on the CAPM, and the historical estimates, when they assume that there is infinite prior uncertainty on the CAPM. Our bias correction corresponds approximately to a prior uncertainty on the CAPM between 3% and 6% in their setup.

6. Conclusion

It is difficult to overstate the importance of the evaluation of the expected rate of return in finance. For a firm's management group, the expected rate of return on equity (or the equity cost of capital) is central to its overall cost of capital, i.e. the rate used to determine which projects will be undertaken. For portfolio managers, the expected rate of return on equity is an essential ingredient in portfolio decisions. For regulatory bodies, the expected return on equity is the basis for determining the fair and reasonable rate of return of a regulated enterprise. This paper is interested in evaluating the rate of return in the context of regulated energy utilities.

The academic literature contains numerous theories for determining the expected rate of return on equity. As those theories are based on simplified assumptions of the complex world in which we live, they cannot be perfect. Even if the theoretical merit of the different models can be debated, the determination of the most valid approach to explain the financial markets really becomes an empirical question – it is necessary to answer the question “which theory best explains the information about actual returns?” This paper empirically examines the validity of the model the most often used in the rate adjustment formula of regulatory bodies, the CAPM, one of the most prominent academic alternatives, the Fama-French model, and a version of the CAPM modified to account for some of its empirical deficiencies, the Adjusted CAPM.

Our empirical results show that the risk premiums for energy utilities estimated with the CAPM are rejected as too low compare to the historical risk premiums. The rejections are related to the well-documented CAPM underestimation of the average returns of low-beta firms and value firms. The Fama-French model and the Adjusted CAPM appear better specified, as we cannot reject the hypothesis that their risk premium errors are equal to zero. They suggest equity risk premiums for gas distribution utilities between 4% and 8%. Overall, our findings demonstrate that models that go beyond the CAPM have the potential to improve the estimation of the cost of equity capital of energy utilities. They are thus interesting avenues for regulators looking to set fair and reasonable equity rates of return.

References

- Banz, R. (1981) 'The Relation between Return and Market Value of Common Stocks,' *Journal of Financial Economics* 9:3-18.
- Bartholdy, J. (1993) 'Testing for a Price-Earnings Effect on the Toronto Stock Exchange,' *Canadian Journal of Administrative Sciences* 10:60-67.
- Basu, S. (1977) 'The Investment Performance of Common Stocks in Relation to Their Price to Earnings Ratios: A Test of the Efficient Market Hypothesis,' *Journal of Finance* 32:663-682.
- Berk, J., R. C. Green, et V. Naik (1999) 'Optimal Investment, Growth Options, and Security Returns,' *Journal of Finance* 54:1553-1607.
- Black, F., M. Jensen and M. Scholes (1972) 'The Capital Asset Pricing Model: Some Empirical Tests' in M.C. Jensen (ed.) *Studies in the Theory of Capital Markets* (New York: Praeger Press) pp.79-121.
- Blume, M. (1971) 'On the Assessment of Risk,' *Journal of Finance* 26:1-10.
- Blume, M. (1975) 'Betas and their Regression Tendencies,' *Journal of Finance* 30:785-895.
- Blume, M. and I. Friend (1973) 'A New Look at the Capital Asset Pricing Model,' *Journal of Finance* 28:19-33.
- Bourgeois, J., and J. Lussier (1994) 'P/Es and Performance in the Canadian Market,' *Canadian Investment Review* Spring:33-39.
- Carhart, M.M. (1997) 'On Persistence in Mutual Fund Performance,' *Journal of Finance* 52:57-82.
- Carlson, M., A. Fisher, and R. Giammarino (2004) 'Corporate Investment and Asset Price Dynamics: Implications for the Cross-Section of Returns,' *Journal of Finance* 59:2577-2603.
- Cochrane, J.H. (1999) 'New Facts in Finance,' *Economic Perspectives Federal Reserve Bank of Chicago* 23:36-58.
- Cochrane, J.H. (2001) *Asset Pricing* (Princeton: Princeton University Press).
- Davis, J. (2006) 'Reviewing the CAPM,' *Canadian Investment Review* Winter:21.
- Elfakhani, S., L.J. Lockwood, and T.S. Zaher (1998) 'Small Firm and Value Effects in the Canadian Stock Market,' *Journal of Financial Research* 21:277-291.
- Fama, E.F., and K.R. French (1992) 'The Cross-Section of Expected Stock Returns,' *Journal of Finance* 47:427-465.
- Fama, E.F., and K.R. French (1993) 'Common Risk Factors in the Returns on Stocks and Bonds,' *Journal of Financial Economics* 33:3-56.
- Fama, E.F., and K.R. French (1996a) 'Multifactor Explanations of Asset Pricing Anomalies,' *Journal of Finance* 51:55-84.
- Fama, E.F., and K.R. French (1996b) 'The CAPM is Wanted, Dead or Alive,' *Journal of Finance* 51:1947-1958.
- Fama, E.F., and K.R. French (1997) 'Industry Cost of Equity,' *Journal of Financial Economics* 43:153-193.
- Fama, E.F., and K.R. French (1998) 'Value Versus Growth: The International Evidence,' *Journal of Finance* 53:1975-1999.
- Fama, E.F., and K.R. French (2004) 'The Capital Asset Pricing Model: Theory and Evidence,' *The Journal of Economic Perspectives* 18:3:25-46.
- Fama, E.F., and J. MacBeth (1973) 'Risk, Return, and Equilibrium: Empirical Tests,' *Journal of Political Economy* 71:607-636.
- Fowler, D.J., C.H. Rorke, and V. Jog (1979) 'Heteroscedasticity, R^2 and Thin Trading on the Toronto Stock Exchange,' *Journal of Finance* 34:5:1201-1210.
- Fowler, D.J., C.H. Rorke, and V. Jog (1980) 'Thin Trading and Beta Estimation Problems on the Toronto Stock Exchange,' *Journal of Business Administration* Fall:77-90.
- Friend, I., and M. Blume (1970) 'Measurement of Portfolio Performance under Uncertainty,' *American Economic Review* 60:607-636.
- Gomez, J., L. Kogan, and L. Zhang (2003) 'Equilibrium Cross-Section of Returns,' *Journal of Political Economy* 111:693-732.

- Hansen, L.P. (1982) 'Large Sample Properties of Generalized Method of Moments Estimators,' *Econometrica* 50:1029-1054.
- Jagannathan, R., and Z. Wang (1996) 'The Conditional CAPM and the Cross-Section of Expected Returns,' *Journal of Finance* 51:3-53.
- Jegadeesh, N., and S. Titman (1993) 'Returns to Buying Winners and Selling Losers: Implications for Stock Market Efficiency,' *Journal of Finance* 48:65-91.
- Kothari, S.P., J. Shanken, and R.G. Sloan (1995) 'Another Look at the Cross-Section of Expected Stock Returns,' *Journal of Finance* 50:185-224.
- L'Her, J.-F., T. Masmoudi, and J.-M. Suret (2002) 'Effets taille et book-to-market au Canada,' *Canadian Investment Review* Summer:6-10.
- L'Her, J.-F., T. Masmoudi, and J.-M. Suret (2004) 'Evidence to Support the Four-Factor Pricing Model from the Canadian Stock Market,' *Journal of International Financial Markets, Institutions & Money* 14:313-328.
- Lakonishok, J., A. Shleifer, and R. Vishny (1994) 'Contrarian Investment, Extrapolation, and Risk,' *Journal of Finance* 49:1541-1578.
- Lintner, J. (1965) 'The Valuation of Risky Assets and the Selection of Risky Investments in Stock Portfolios and Capital Budgets,' *Review of Economics and Statistics* 47:13-37.
- Litzenberger, R., K. Ramaswamy, and H. Sosin (1980) 'On the CAPM Approach to the Estimation of A Public Utility's Cost of Equity Capital,' *Journal of Finance* 35:369-383.
- Lo, A., and A.C. MacKinlay (1990) 'Data-Snooping Biases in Tests of Financial Asset Pricing Models,' *Review of Financial Studies* 3:431-468.
- Merton, R. (1973) 'An Intertemporal Capital Asset Pricing Model,' *Econometrica* 41:867-887.
- Morin, R.A. (1980) 'Market Line Theory and the Canadian Equity Market,' *Journal of Business Administration* Fall:57-76.
- Morin, R.A. (2006) *New Regulatory Finance*, (Vienna:Public Utilities Reports).
- Newey, W., and K. West (1987) 'A Simple, Positive Semi-Definite, Heteroscedasticity and Autocorrelation Consistent Covariance Matrix,' *Econometrica* 55:703-708.
- Pastor, L., and R.F. Stambaugh (1999) 'Costs of Equity Capital and Model Mispricing,' *Journal of Finance* 54:67-121.
- Ross, S.A. (1976) 'The Arbitrage Theory of Capital Asset Pricing,' *Journal of Economic Theory* 13:341-360.
- Schink, G.R., and R.S. Bower (1994) 'Application of the Fama-French Model to Utility Stocks,' *Financial Markets, Institutions and Instruments* 3:74-96.
- Sharpe, W.F. (1964) 'Capital Asset Prices: A Theory of Market Equilibrium under Conditions of Risk,' *Journal of Finance* 19:425-442.
- Stein, J. (1996) 'Rational Capital Budgeting in an Irrational World,' *Journal of Business* 69:429-455.

TABLE 1: Descriptive Statistics of Monthly Returns

Variable	N	Mean	St Dev	Min	Max	Brief Description
Panel A: Canadian Energy Utilities						
ATCO	263	0.013	0.067	-0.301	0.279	ATCO Ltd.
Algonqui	108	0.009	0.054	-0.163	0.166	Algonquin Power Income Fund
CanUtili	263	0.012	0.043	-0.107	0.159	Canadian Utilities Limited
EPCOR	114	0.008	0.046	-0.201	0.108	EPCOR Power
Emera	143	0.009	0.043	-0.137	0.115	Emera Incorporated
Enbridge	263	0.011	0.054	-0.365	0.205	Enbridge Inc.
FortChic	107	0.009	0.054	-0.119	0.210	Fort Chicago Energy Partners
Fortis	228	0.013	0.041	-0.134	0.146	Fortis Inc.
GazMetro	166	0.010	0.037	-0.134	0.084	Gaz Métro Limited Partnerships
NorthPow	104	0.011	0.063	-0.202	0.205	Northland Power Income Fund
PacNorth	263	0.010	0.070	-0.400	0.507	Pacific Northern Gas
TransAlt	263	0.009	0.048	-0.217	0.188	TransAlta Corporation
TransCan	258	0.008	0.054	-0.214	0.254	TransCanada Pipelines
CAindex	263	0.010	0.031	-0.130	0.087	Equally-weighted portfolio
Panel B: U.S. Gas Distribution Utilities						
AGL_Res	407	0.013	0.052	-0.138	0.253	AGL Resources Inc.
Atmos	277	0.013	0.063	-0.302	0.269	Atmos Energy Corp.
Laclede	407	0.012	0.056	-0.148	0.374	Laclede Group
NJ_Res	407	0.013	0.063	-0.171	0.577	New Jersey Resources Corp.
Northwes	407	0.012	0.060	-0.236	0.274	Northwest Natural Gas Co.
Piedmont	407	0.013	0.059	-0.188	0.315	Piedmont Natural Gas Co.
SouthJer	407	0.012	0.058	-0.194	0.486	South Jersey Industries
Southwes	407	0.011	0.070	-0.304	0.234	Southwest Gas Corp.
WGL_Hold	407	0.012	0.071	-0.232	0.807	WGL Holdings Inc.
USindex	407	0.012	0.041	-0.121	0.338	Equally-weighted portfolio
Panel C: Sector Indexes						
TSX_Util	228	0.010	0.037	-0.101	0.114	S&P/TSX Utilities Index
DJ_GasDi	180	0.012	0.043	-0.139	0.137	Dow Jones Canada Gas Distribution Index
DJ_Util	180	0.007	0.036	-0.139	0.101	Dow Jones Canada Utilities Index
DJ_GasUS	180	0.012	0.039	-0.120	0.143	Dow Jones US Gas Distribution Index
DJ_UtiUS	180	0.009	0.042	-0.127	0.136	Dow Jones US Utilities Index
FF_Util	407	0.010	0.041	-0.123	0.188	Fama-French US Utilities Index

NOTES: This table presents descriptive statistics on the monthly returns of 13 Canadian utilities and their equally-weighted portfolio (CAindex) in Panel A, of nine U.S. gas distribution utilities and their equally-weighted portfolio (USindex) in Panel B, and on selected utilities sector indexes in Panel C. The columns labelled N, Mean, St Dev, Min and Max correspond respectively to the number of observations, the mean, the standard deviation, the minimum value and the maximum value. The column labelled Brief Description gives the full name of the utility holding companies or the utilities sector indexes.

TABLE 2: CAPM Risk Premium Estimates for the Gas Distribution Reference Portfolios

Portfolio	Estimate	SE	t-stat	Prob > t
Panel A: Risk Premium Error (Alpha)				
DJ_GasDi	8.43	3.79	2.22	0.028
CAindex	4.52	2.33	1.94	0.053
DJ_GasUS	7.39	3.34	2.21	0.028
USindex	6.23	1.95	3.19	0.002
Panel B: Beta				
DJ_GasDi	0.21	0.11	1.95	0.053
CAindex	0.34	0.07	4.60	<.0001
DJ_GasUS	0.37	0.09	4.16	<.0001
USindex	0.46	0.06	7.37	<.0001
Panel C: Risk Premium				
DJ_GasDi	1.66	1.28	1.30	0.195
CAindex	1.76	1.11	1.58	0.116
DJ_GasUS	2.74	1.46	1.87	0.063
USindex	2.72	1.33	2.04	0.042

NOTES: This table reports the results of the estimation of the CAPM for the gas distribution reference portfolios. Panels A to C look at the annualized risk premium error or alpha (in percent), the market beta and the annualized risk premium (in percent), respectively. The columns labelled Estimate, SE, t-stat and Prob > |t| give respectively the estimates, their standard errors, their t-statistics and their p-values.

TABLE 3: Fama-French Risk Premium Estimates for the Gas Distribution Reference Portfolios

Portfolio	Estimate	SE	t-stat	Prob > t
Panel A: Risk Premium Error (Alpha)				
DJ_GasDi	4.45	3.11	1.43	0.155
CAindex	2.04	1.85	1.11	0.270
DJ_GasUS	1.31	3.01	0.43	0.665
USindex	0.31	1.80	0.17	0.863
Panel B: Beta				
DJ_GasDi	0.41	0.08	5.06	<.0001
CAindex	0.48	0.05	10.38	<.0001
DJ_GasUS	0.63	0.07	9.64	<.0001
USindex	0.64	0.06	11.18	<.0001
Panel C: Size Beta				
DJ_GasDi	-0.01	0.08	-0.11	0.912
CAindex	-0.02	0.05	-0.51	0.613
DJ_GasUS	0.00	0.09	0.04	0.971
USindex	0.20	0.07	2.9	0.004
Panel D: Value Beta				
DJ_GasDi	0.33	0.06	5.12	<.0001
CAindex	0.30	0.04	7.64	<.0001
DJ_GasUS	0.59	0.13	4.41	<.0001
USindex	0.71	0.10	7.21	<.0001
Panel E: Risk Premium				
DJ_GasDi	5.64	1.78	3.17	0.002
CAindex	4.23	1.52	2.78	0.006
DJ_GasUS	8.83	2.32	3.81	0.000
USindex	8.64	2.16	4	<.0001

NOTES: This table reports the results of the estimation of the Fama-French model for the gas distribution reference portfolios. Panels A to E look at the annualized risk premium error or alpha (in percent), the market beta, the size beta, the value beta and the annualized risk premium (in percent), respectively. The columns labelled Estimate, SE, t-stat and Prob > |t| give respectively the estimates, their standard errors, their t-statistics and their p-values.

TABLE 4: Adjusted CAPM Risk Premium Estimates for the Gas Distribution Reference Portfolios

Portfolio	Estimate	SE	t-stat	Prob > t
Panel A: Risk Premium Error (Alpha)				
DJ_GasDi	1.82	2.00	0.91	0.365
CAindex	1.39	1.54	0.9	0.366
DJ_GasUS	2.68	1.97	1.36	0.176
USindex	2.89	1.37	2.11	0.035
Panel B: Adjusted Beta				
DJ_GasDi	0.47	0.07	6.69	<.0001
CAindex	0.56	0.05	11.38	<.0001
DJ_GasUS	0.58	0.06	9.84	<.0001
USindex	0.64	0.04	15.44	<.0001
Panel C: Bias Correction				
DJ_GasDi	4.46	2.28	1.96	0.052
CAindex	1.99	1.10	1.81	0.071
DJ_GasUS	3.12	1.61	1.94	0.054
USindex	2.26	0.77	2.94	0.004
Panel D: Risk Premium				
DJ_GasDi	8.27	2.71	3.05	0.003
CAindex	4.88	2.11	2.31	0.021
DJ_GasUS	7.45	2.52	2.96	0.004
USindex	6.05	1.89	3.21	0.002

NOTES: This table reports the results of the estimation of the Adjusted CAPM for the gas distribution reference portfolios. Panels A to D look at the annualized risk premium error or alpha (in percent), the adjusted market beta, the bias correction and the annualized risk premium (in percent), respectively. The columns labelled Estimate, SE, t-stat and Prob > |t| give respectively the estimates, their standard errors, their t-statistics and their p-values.

FIGURE 1: Risk Premium Errors with the CAPM for Various Utilities

Figure 1a: Firms in the CAindex Portfolio

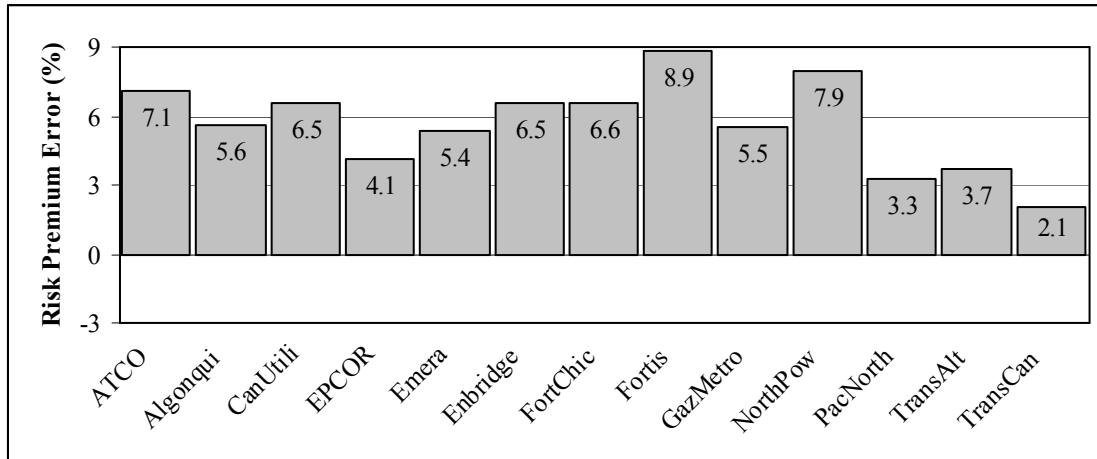


Figure 1b: Firms in the USindex Portfolio

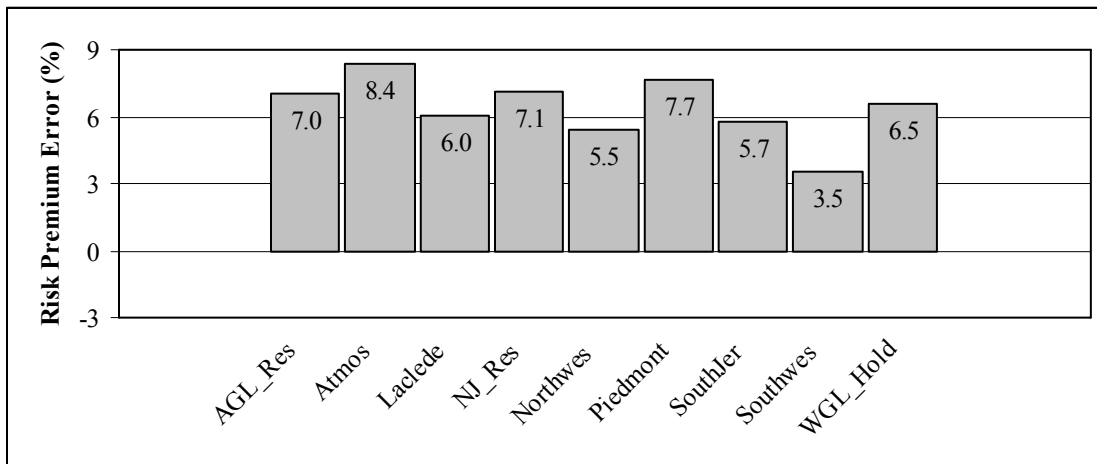
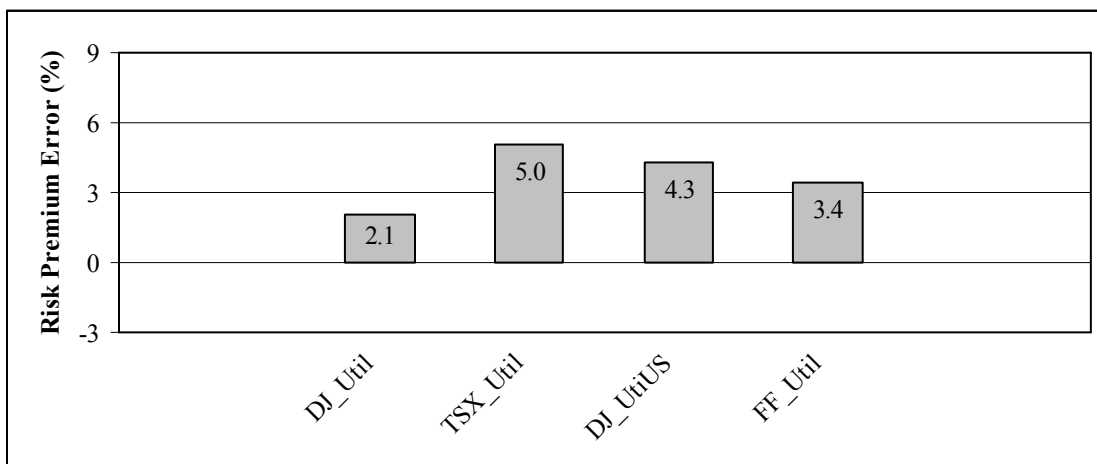


Figure 1c: Utilities Reference Portfolios



NOTES: This figure shows the annualized risk premium errors (or alphas) with the CAPM for the Canadian utilities in the CAindex portfolio (Figure 1a), the U.S. gas distributors in the USindex portfolio (Figure 1b) and the utilities reference portfolios (Figure 1c).

FIGURE 2: Comparison of the Fama-French and CAPM Results

Figure 2a: Risk Premium Errors

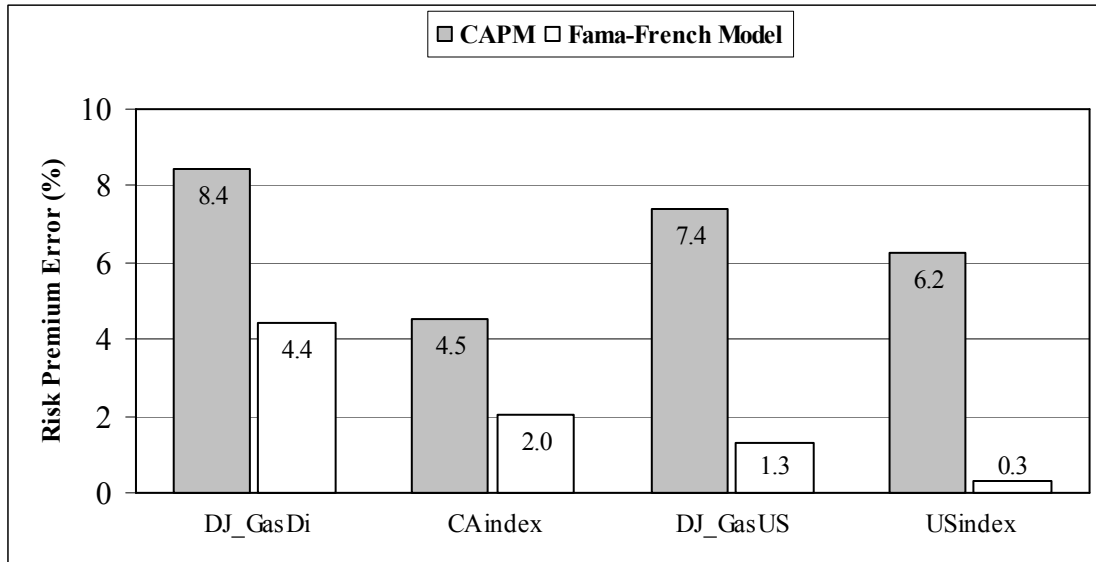
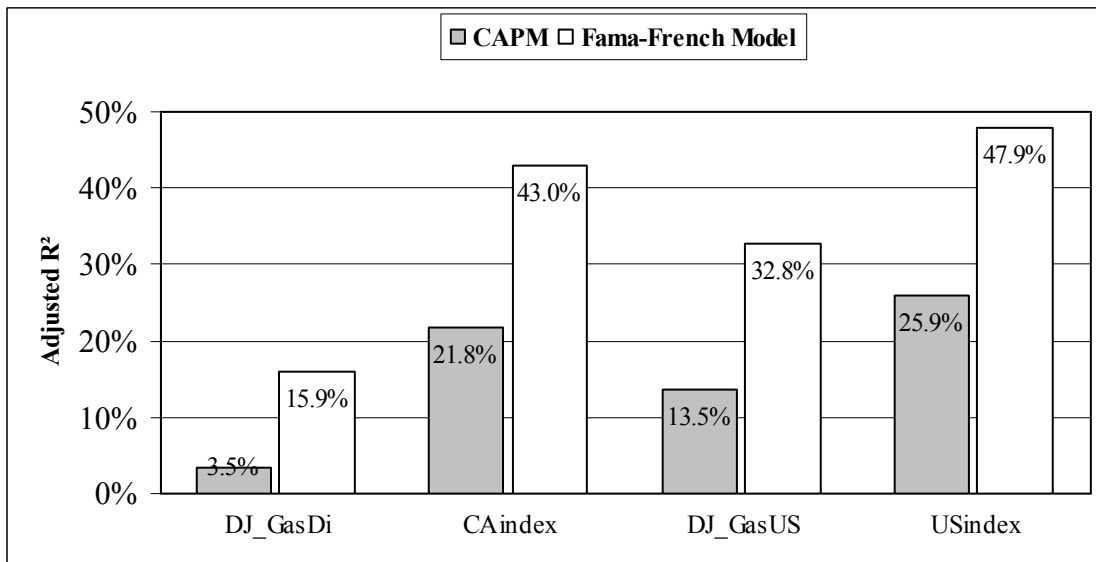


Figure 2b: Adjusted R²s



NOTES: This figure compares the results of the CAPM (gray bars) and the Fama-French model (white bars) in terms of annualized risk premium errors (or alphas) (Figure 2a) and adjusted R² (Figure 2b) for the gas distribution reference portfolios.

FIGURE 3: Risk Premium Errors with the Fama-French Model for Various Utilities

Figure 3a: Firms in the CAindex Portfolio

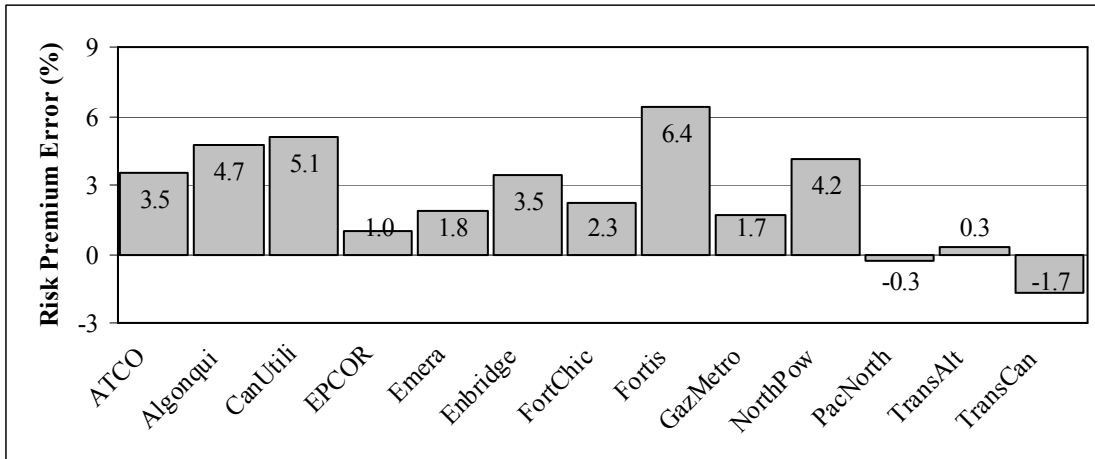


Figure 3b: Firms in the USindex Portfolio

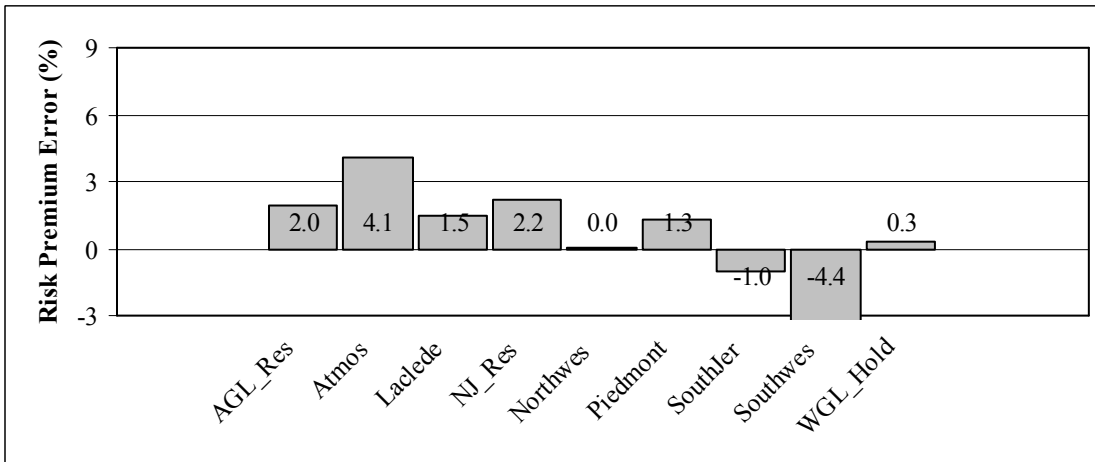
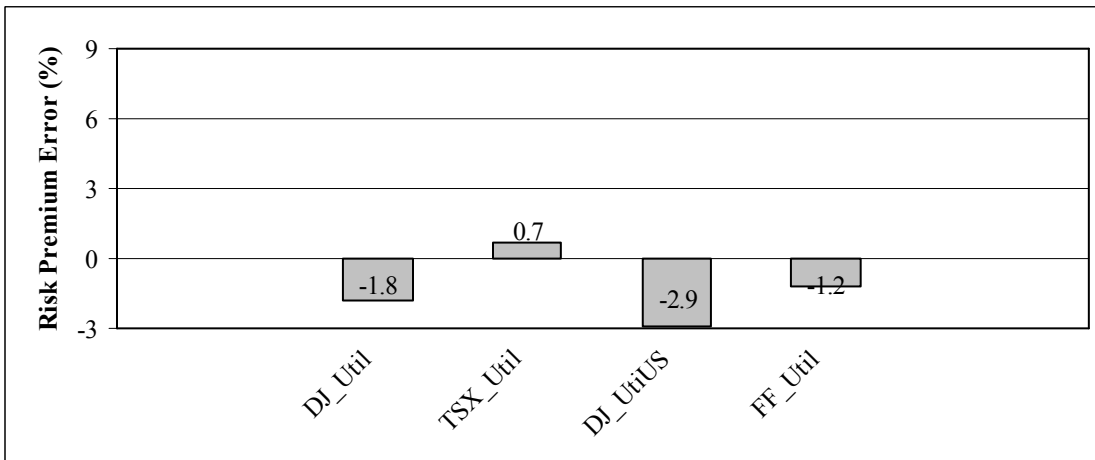


Figure 3c: Utilities Reference Portfolios



NOTES: This figure shows the annualized risk premium errors (or alphas) with the Fama-French model for the Canadian utilities in the CAindex portfolio (Figure 3a), the U.S. gas distributors in the USindex portfolio (Figure 3b) and the utilities reference portfolios (Figure 3c).

FIGURE 4: Value Betas for Various Utilities

Figure 4a: Firms in the CAindex Portfolio

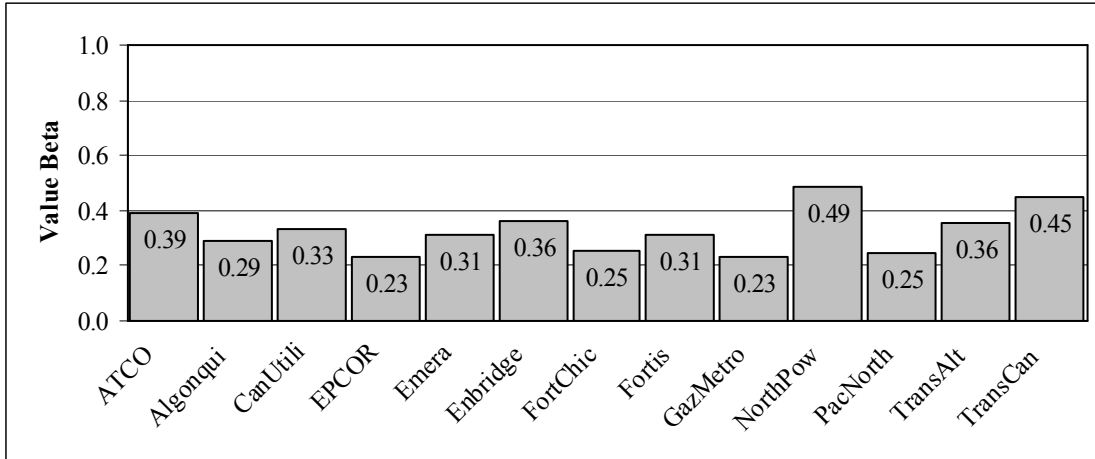


Figure 4b: Firms in the USindex Portfolio

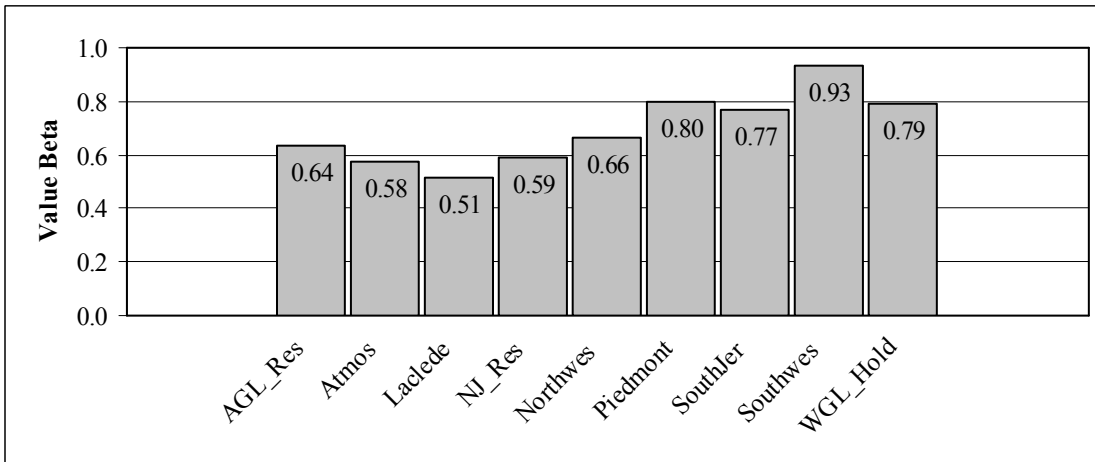
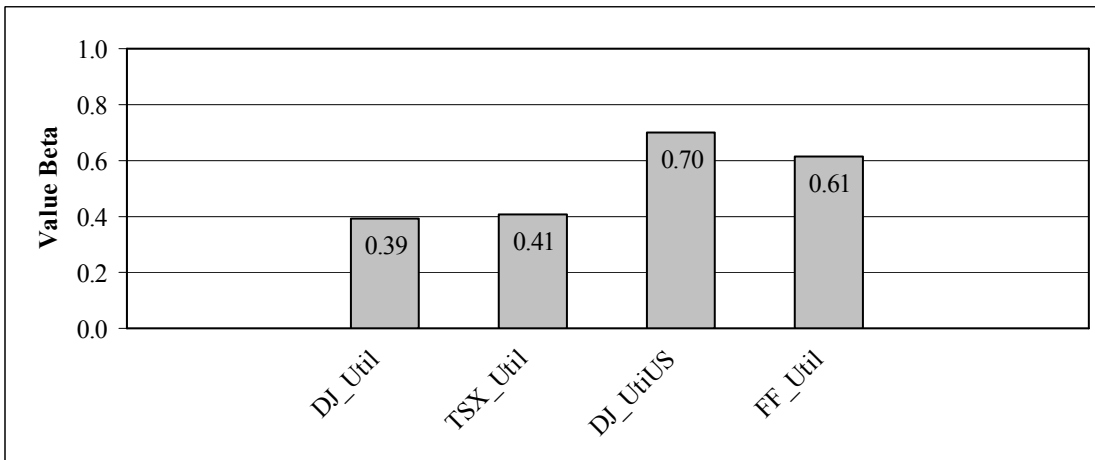


Figure 4c: Utilities Reference Portfolios



NOTES: This figure shows the value betas in the Fama-French model for the Canadian utilities in the CAindex portfolio (Figure 4a), the U.S. gas distributors in the USindex portfolio (Figure 4b) and the utilities reference portfolios (Figure 4c).

FIGURE 5: Risk Premium Errors with the Adjusted CAPM for Various Utilities

Figure 5a: Firms in the CAindex Portfolio

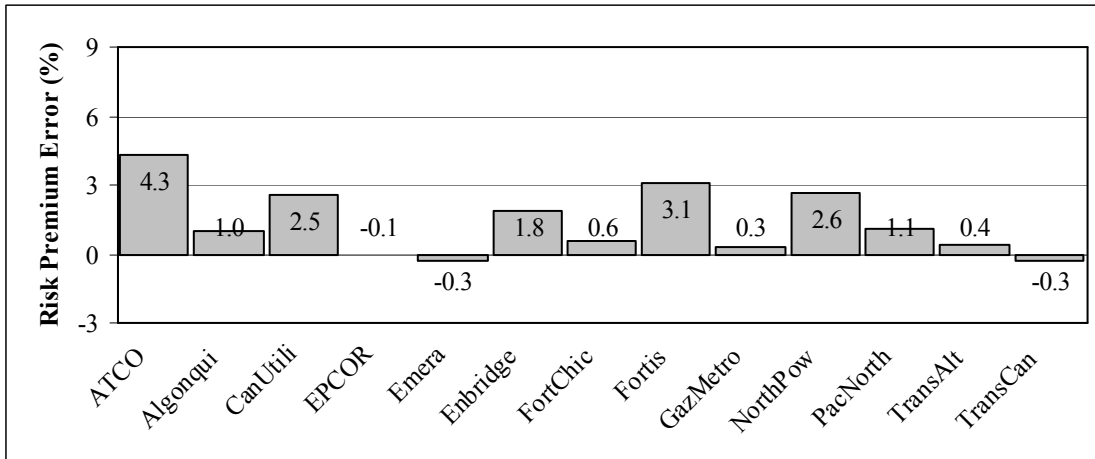


Figure 5b: Firms in the USindex Portfolio

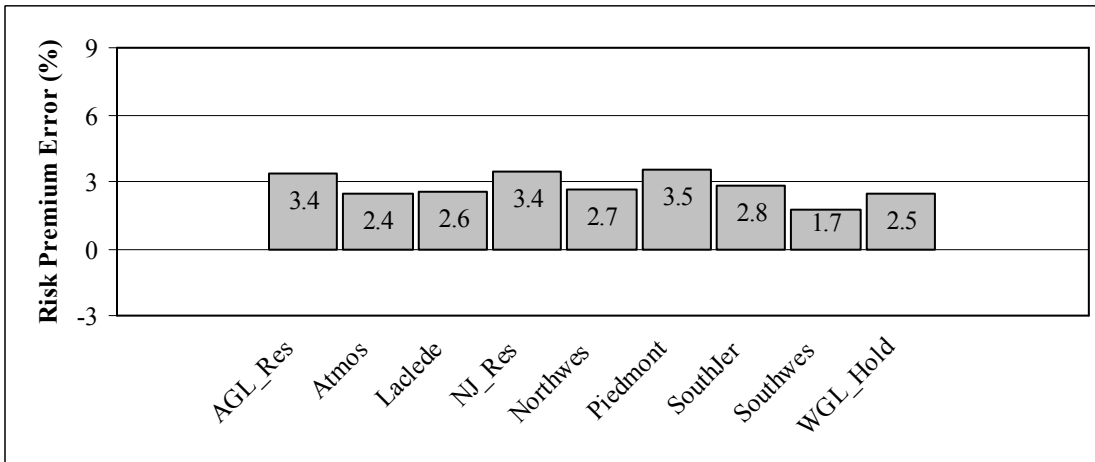
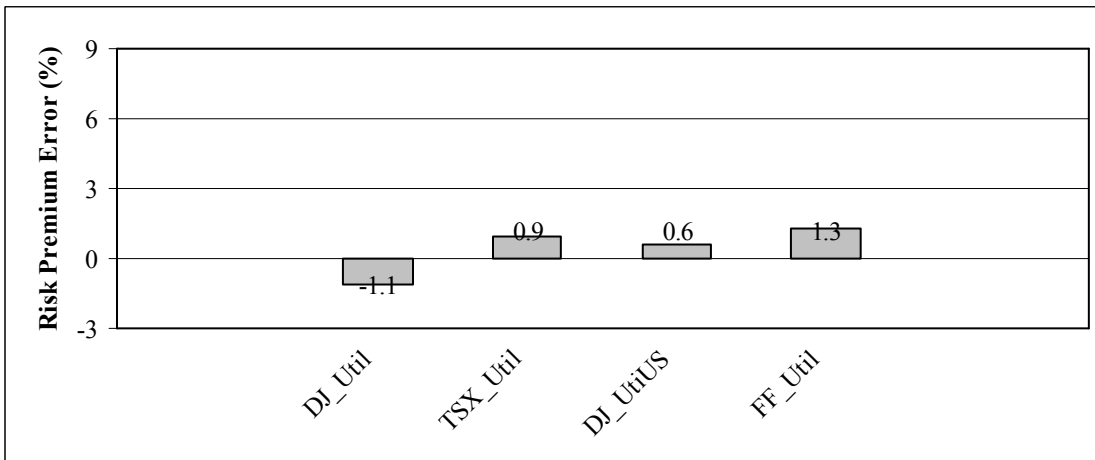


Figure 5c: Utilities Reference Portfolios



NOTES: This figure shows the annualized risk premium errors (or alphas) with the Adjusted CAPM for the Canadian utilities in the CAindex portfolio (Figure 5a), the U.S. gas distributors in the USindex portfolio (Figure 5b) and the utilities reference portfolios (Figure 5c).